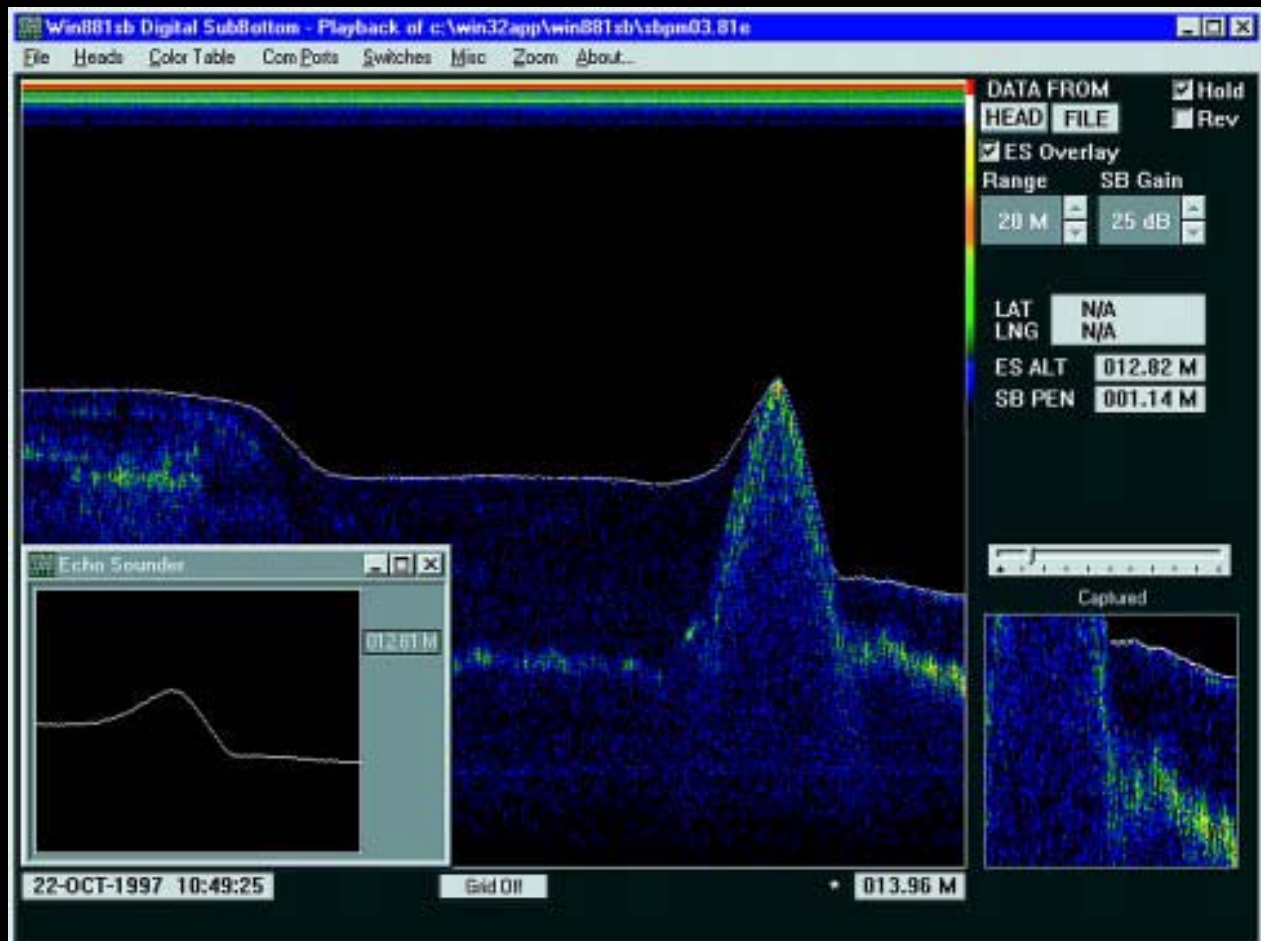


REDEFINING IMAGE CLARITY

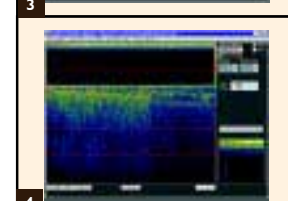
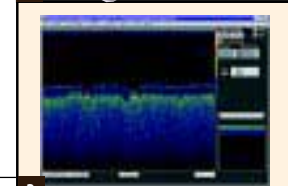
The Imagenex DF-1030
Digital Sub-Bottom Profiler



The DF-1030 Digital Sub-Bottom Profiler Provides the
Sharpest Image from a depth of 1 Metre to 1000 Metres in a
50 Metre Range.

IMAGENEX DF-1030 DIGITAL SUB-BOTTOM PROFILER

At **IMAGENEX**, we think no Sonar feature is more important than **image clarity**. Our design team helped pioneer modern imaging sonar technology, and we continue to lead the way, pushing the **performance** boundaries of our high resolution sonar units. With continuous technological advancements, software and hardware **compatibility**, **portability** and overall ease of use, **IMAGENEX** sonar systems set **the industry standard** as the most **specified** sonar systems **world wide**.



- 1) Laptop
- 2) 4 Conductor Shielded Cable
- 3) Pipe Crossing
- 4) Multi Sediment Layer

IMAGENEX MODEL DF-1030 TECHNICAL SPECIFICATIONS

FEATURES

- Low Cost
- Low Power Consumption
- Lightweight and Very Portable
- Resolutions to 1 cm
- Noise Immune
- Standard RS-485 Serial Interface
- Imagenex ΔF Technology

APPLICATIONS

- Cable and Pipeline Crossings
- Riverbed Inspection
- Archaeology
- Site Clearance
- Mining and Dredging

The DF-1030's superior imaging is supported by the latest analog to digital conversion technology. Imagenex Windows™ compatible software controls, displays and records data from the Model DF-1030 digital sub-bottom profiler.

OPTION

The Imagenex 881 Echo Sounder can be used in conjunction with the DF-1030 in order to discriminate the bottom (mud line) and the sub-bottom returns. Both units can be connected using the same cable and can be individually enabled or disabled.

DF-1030 SUB-BOTTOM PROFILER SPECIFICATIONS

RECOMMENDED COMPUTER SPECIFICATIONS:

100 MHz Pentium, 16 MB Ram, 1 GB Hard Disk, 800 x 600 x 256 Colour Graphics.

FREQUENCY:

*CTFM 10 – 30 kHz (*Continuous Transmission Frequency Modulation)

RANGE: 5 – 50 m

TRANSDUCER BEAM WIDTH:

20° Nominal Conical Beam

POWER SUPPLY:

22 – 48 VDC at 1 Amp max.

INTERFACE:

RS-485 Serial Interface operating at 115.2 kbps

CABLE LENGTH: 1000 m on typical twisted shielded pair

STANDARD OPERATING DEPTH:

1000 m – (3,300 ft.)

MATERIALS: 6061-T6 Aluminum, 300 Series Stainless Steel, PVC, Acetal Homopolymer, Epoxy

FINISH:

Polyester Powder Coat - Yellow



DIMENSIONS:

564 mm (22.2 in) long x 166 mm (6.6 in.) wide x 267 mm (10.5 in) high

WEIGHT:

20 Kg in Air (44 lb.), 10 Kg in Water (22 lb.)

Roper Resources Ltd.
984 St. Patrick Street
Victoria, BC, Canada, V8S 4X5

Canadian Sales/Fax: (250) 361-9115
USA Sales: (805) 798-0277
Email: Chris@RoperResources.com
Website: www.roperrresources.com

Specifications subject to change without notice.

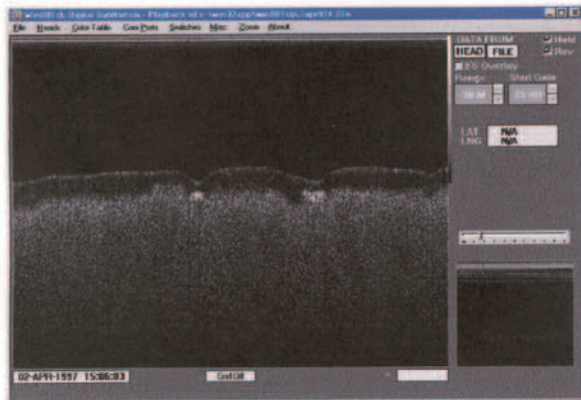
MODEL DF-1030 DIGITAL SUB-BOTTOM PROFILER

FEATURES:

- low cost
- low power consumption
- lightweight and very portable
- resolutions to 1 cm
- noise immune
- standard RS-485 serial interface
- Delta - F technology

APPLICATIONS:

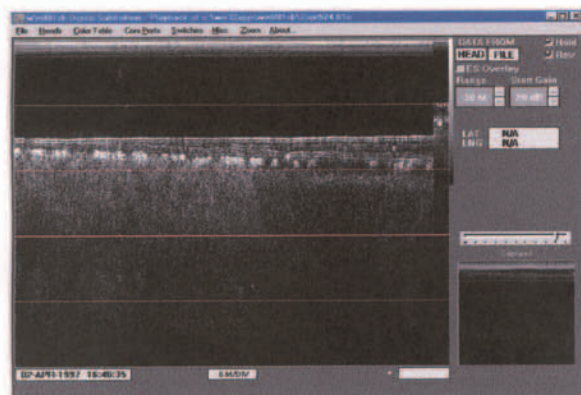
- cable and pipeline crossings
- river bed inspection
- archaeology
- site clearance
- mining and dredging



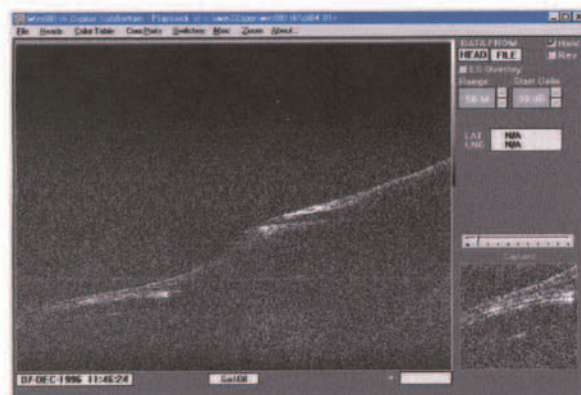
PIPELINE CROSSING RANGE: 30 meters



SILT CONTAINMENT BERM RANGE: 30 meters



MULTIPLE SEDIMENT LAYERS RANGE: 20 meters



LAKE SURVEY RANGE: 50 meters

LAKE SURVEY FOR POTENTIAL PIPELINE SITE



Image #1



Image #2



Image #3



Image #4



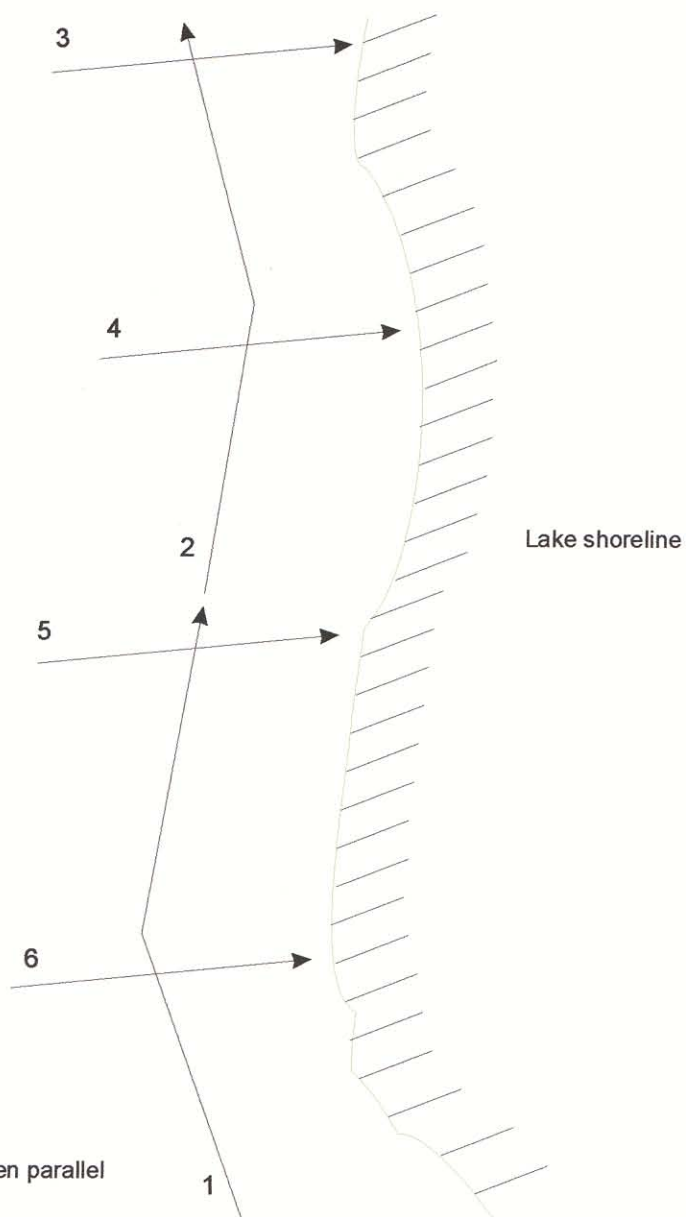
Image #5



Image #6

LAKE SURVEY FOR POTENTIAL PIPELINE SITE

Images 3 through 6 were taken perpendicular to the shoreline. The distance between each run was 250 meters.



Images 1 and 2 were taken parallel to the shoreline.

IMAGENEX MODEL DF-1030 DIGITAL SUB-BOTTOM PROFILER

APPLICATIONS:

- Cable & Pipeline Crossings
- Riverbed Inspection
- Archaeology
- Site Clearance
- Mining & Dredging

FEATURES:

- Low cost
- Low power consumption
- Lightweight and very portable
- Resolutions to 10 mm
- Noise immune
- Standard RS-485 Serial Interface
- Imagenex ΔF Technology
- Works in parallel with 881 Echo Sounder



The DF-1030 is a compact, lightweight, high-resolution underwater unit that uses ΔF technology incorporating CTFM (Continuous Transmission Frequency Modulation). The Sub-Bottom Profiler includes a standard RS-485 serial interface, transmitter, high performance, low frequency transducer, and an ultra low noise receiver circuit, which gives Imagenex sonar units their superior performance. The Imagenex 881 Echo Sounder can be used in conjunction with the DF-1030 in order to discriminate the bottom (mud line) and the sub-bottom returns. Both units can be connected using the same cable and can be individually enabled or disabled.